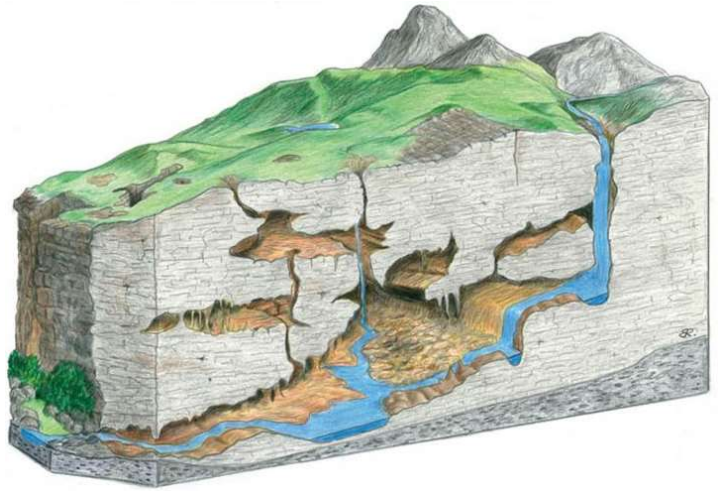


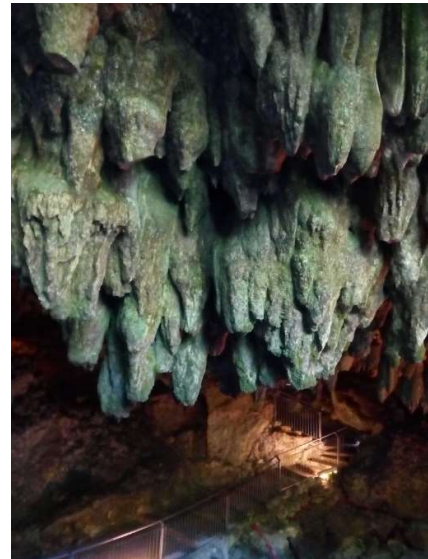
CAVES OF COLLEPARDO

The Colleparado caves were born as a result of karst phenomena, that is to say the underground erosion of the soil by water.



These caves are formed by various rooms, where the characteristic limestone formations are found:

the stalactites, which hang from the top down;



the stalagmites, which rise from the bottom upwards.



Inside the caves, remains of fauna dating back to the Pleistocene and human skeletons from the Bronze Age that testify to the funerary use of the cave have been found.

